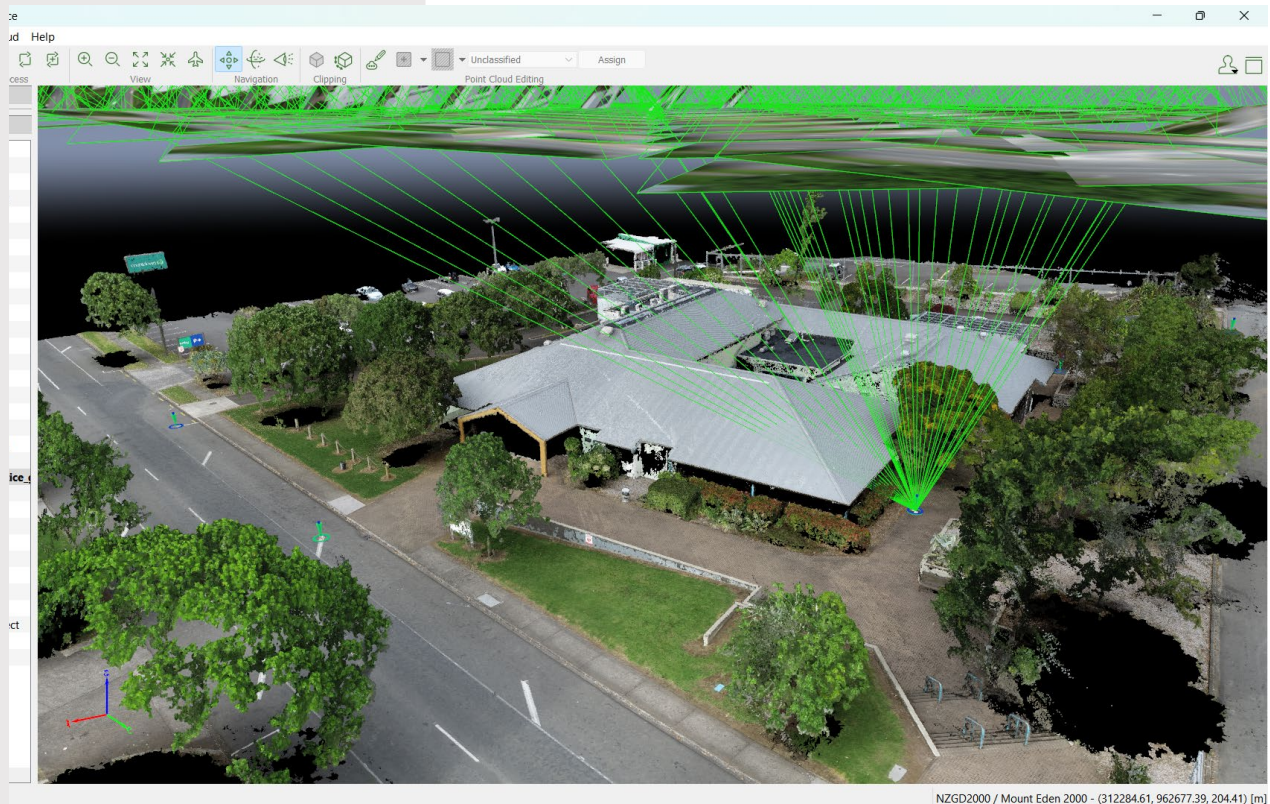




Donaldson's Surveyors use specialized survey grade drone equipment to capture spatial data, and to ensure their clients receive precise point cloud data undertake necessary dataset corrections to ensure survey grade accuracies suitable for civil engineering and building design. Aerial based data collection with drones is very useful in analyzing ground surface conditions, particularly in difficult-to-access locations. Aerial road and slip surveys can be done quickly and safely without compromising on the level of detail required.



Donaldson's Surveyors use specialized 3D mapping software to extract and vectorize datasets after completing survey grade adjustments that ensures images are orthorectified and collated to local geodetic database suitable for your project works to commence in accordance with local authority engineering standards and guidelines.